



Beverley

LEISURE HOMES



2024
RANGE

Making it Personal



Contents

NORWOOD TWENTY	06	WEIGHTS & DIMENSIONS	18
NORWOOD FOURTEEN	10	FEATURES	18
NORWOOD THIRTEEN	12	EXTERIOR COLOUR CHOICE	19
NORWOOD TWELVE	16	WINDOW COLOUR CHOICE	19

At Beverley Leisure Homes, “making it personal” isn’t just a phrase - it’s a promise we hold dear. We believe that true leisure is about having the space to embrace your time, your way. This is what inspires us to create high quality lodges that resonate with families to build happy memories that feel unique to your lifestyle.



Quality Craftsmanship

At Beverley Leisure Homes, we take pride in setting new standards of excellence in the leisure home industry.

Our commitment to delivering quality goes beyond words - it's backed by the NCC (National Caravan Council) certification, a seal of approval that guarantees our dedication to exceptional craftsmanship and unmatched standards.

When you choose Beverley Leisure Homes, you're not just investing in a leisure home - you're investing in peace of mind. Our NCC qualification reflects our unwavering commitment to your satisfaction, ensuring that our leisure homes are not only a space of comfort and luxury but also a haven of safety and reliability.

As a dedicated and trusted leisure home manufacturer, we take immense pride in offering our industry leading warranty along with our promise to deliver excellence that endures.



Our holiday homes aren't just structures; they're canvases for your stories, sanctuaries for your relaxation, and gateways to your most cherished moments.

Welcome to Beverley Leisure Homes...



Taking Care of our environmental responsibility

From the foundation up, we strive to implement technologies and practices that minimise our ecological footprint. We're on a constant journey to push the boundaries of eco-consciousness. From our solar-powered factories to waste recycling and reduction solutions in our production process, our lodges exemplify the harmonious relationship between luxury and sustainability.



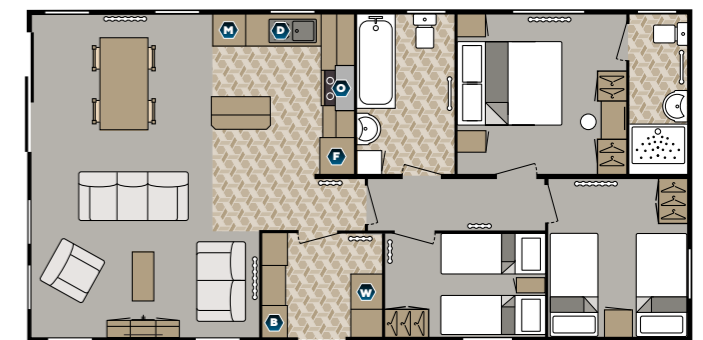
Norwood, a stunning concept with so many opportunities.



Twenty ft Twin Platform



40 x 20 - 2 Bedroom
Master Bedroom - 1 x Kingsize (1525mm x 1900mm)
Second Bedroom - 2 x Single (910mm x 1900mm)



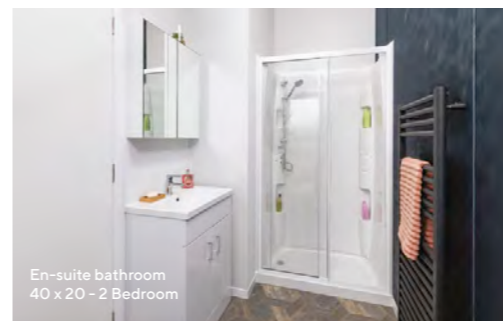
40 x 20 - 3 Bedroom
Master Bedroom - 1 x Double (1525mm x 1900mm)
Second Bedroom - 2 x Single (910mm x 1900mm)
Third Bedroom - 2 x Single (765mm x 1900mm)



40 x 20 - 2 Bedroom



40 x 20 - 2 Bedroom



En-suite bathroom
40 x 20 - 2 Bedroom



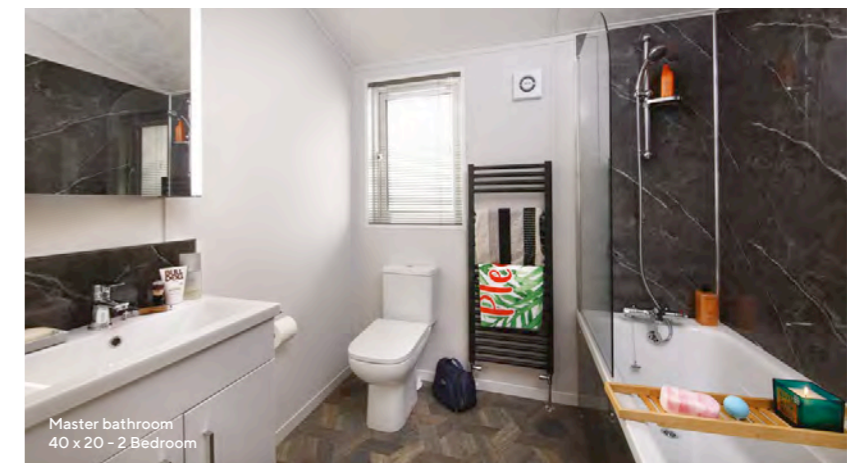
40 x 20 - 2 Bedroom



40 x 20 - 2 Bedroom



40 x 20 - 2 Bedroom



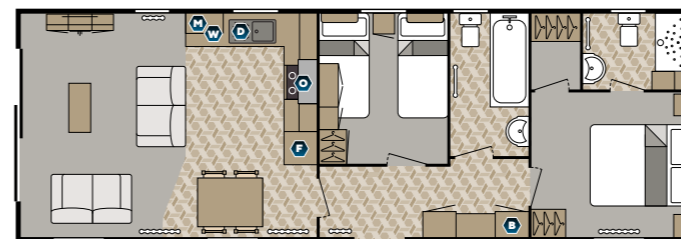
Master bathroom
40 x 20 - 2 Bedroom



Stunning in quality, perfect in proportions.



Fourteen ft Platform



41 x 14 - 2 Bedroom
Master Bedroom - 1x Kingsize (1500mm x 1900mm)
Second Bedroom - 2x Single (910mm x 1900mm)



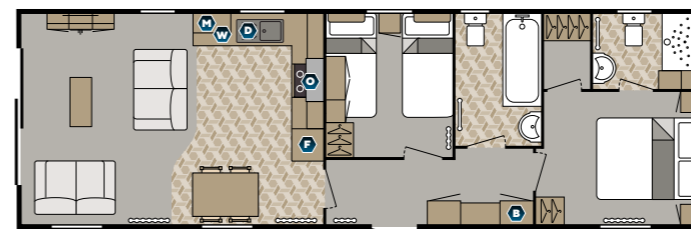
41 x 14 - 3 Bedroom
Master Bedroom - 1x Kingsize (1500mm x 2000mm)
Second Bedroom - 2x Single (760mm x 1900mm)
Third Bedroom - 2x Single (760mm x 1900mm)



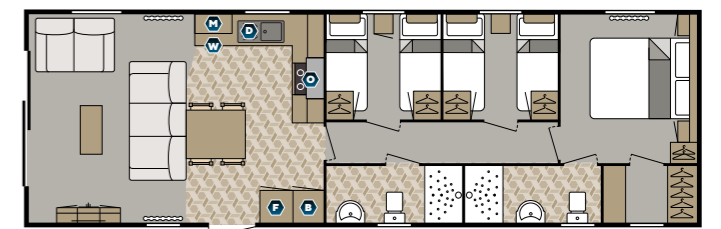
The perfect investment in your leisure time.



Thirteen ft Platform



41 x 13 - 2 Bedroom
Master Bedroom - 1 x Kingsize (1500mm x 1900mm)
Second Bedroom - 2 x Single (910mm x 1900mm)



41 x 13 - 3 Bedroom
Master Bedroom - 1 x Kingsize (1500mm x 2000mm)
Second Bedroom - 2 x Single (760mm x 1800mm)
Third Bedroom - 2 x Single (760mm x 1800mm)



41 x 14 - 2 Bedroom



Main Bathroom
41 x 14 - 2 Bedroom



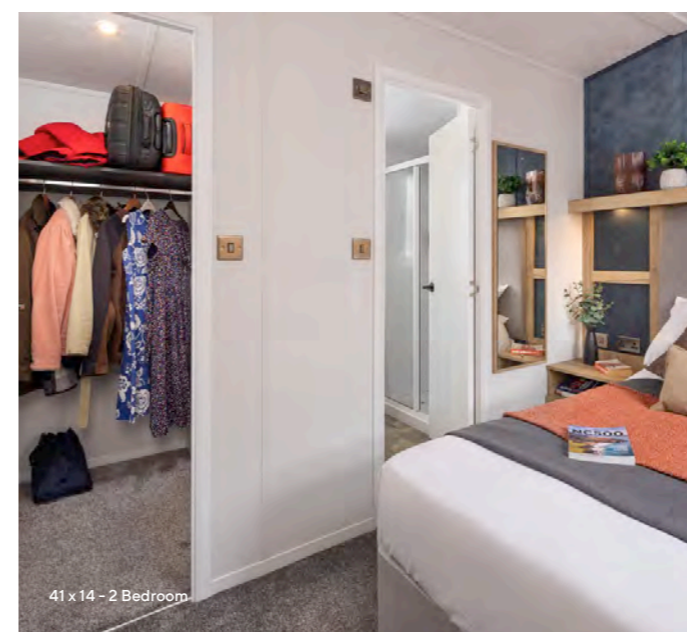
En-suite Bathroom
41 x 14 - 2 Bedroom



41 x 14 - 2 Bedroom



41 x 14 - 2 Bedroom

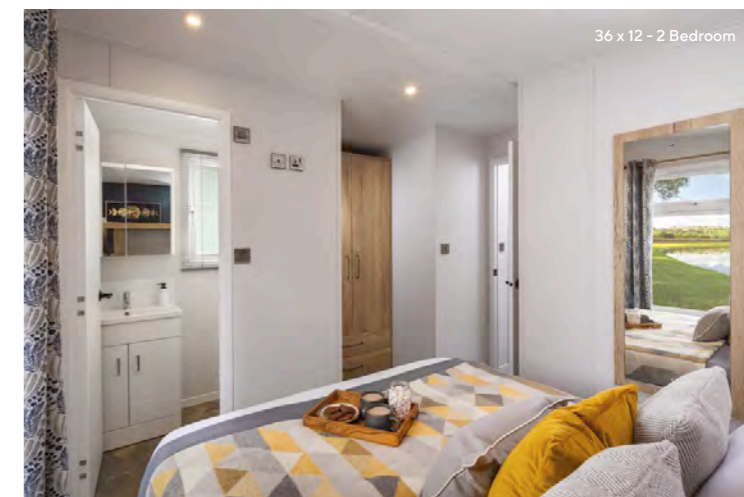


41 x 14 - 2 Bedroom

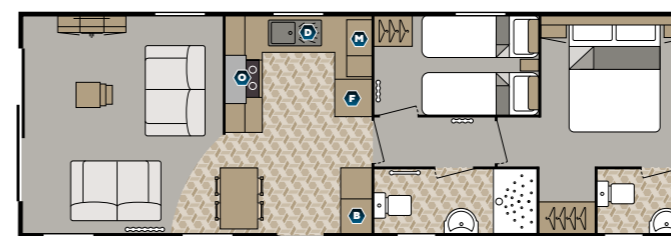
Rest assured we guarantee stunning build quality from beginning to end.



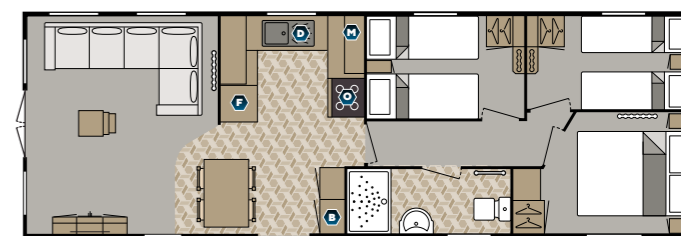
A Compact platform vast in quality.



Twelve ft. Platform



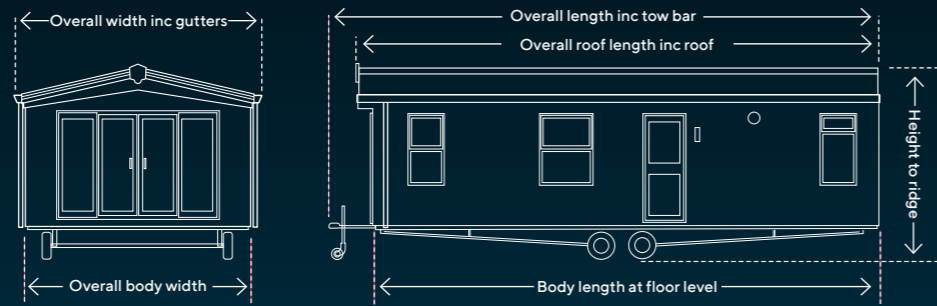
36 x 12 - 2 Bedroom
Master Bedroom - 1 x Kingsize (1500mm x 1900mm)
Second Bedroom - 2 x Single (685mm x 1830mm)



36 x 12 - 3 Bedroom
Master Bedroom - 1 x Double (1370mm x 1900mm)
Second Bedroom - 2 x Single (685mm x 1830mm)
Third Bedroom - 2 x Single (610mm x 1830mm)

NORWOOD SPECIFICATION

External Dimensions



	Overall length inc tow bar	Overall roof length inc Roof	Body length at floor level	Overall body width	Overall width inc gutters	Overall height inc flues	Height to ridge	Weight kg
36 x 12 - 2	11640mm	11380mm	11040mm	3718mm	3988mm	4028mm	3380mm	4960kg
36 x 12 - 3	11640mm	11380mm	11040mm	3718mm	3988mm	4028mm	3380mm	4970kg
41 x 13 - 2	13165mm	12865mm	12565mm	4025mm	4295mm	4335mm	3446mm	T.B.C.
41 x 13 - 3	13165mm	12865mm	12565mm	4025mm	4295mm	4335mm	3446mm	T.B.C.
41 x 14 - 2	13165mm	12865mm	12565mm	4327mm	4597mm	4637mm	3645mm	7210 kg
41 x 14 - 3	13165mm	12865mm	12565mm	4327mm	4597mm	4637mm	3645mm	7400 kg
40 x 20 - 2 Each half	12860mm	12565mm	12260mm	3078mm	3213mm	3253mm	4040mm	5740 kg
42 x 20 - 3 Each half	12860mm	12565mm	12260mm	3078mm	3213mm	3253mm	4040mm	T.B.C.

Specification

	40 x 20 - 2	40 x 20 - 3	41 x 14 - 2	41 x 14 - 3	41 x 13 - 2	41 x 13 - 3	36 x 12 - 2	36 x 12 - 3
Integrated fridge freezer	✓	✓	✓	✓	✓	✓	✓	✓
Integrated washing machine	✓	✓	✓	✓	✓	✓	✗	✗
Integrated microwave	✓	✓	✓	✓	✓	✓	✓	✓
Oven, hob & extractor	✓	✓	✓	✓	✓	✓	✓	✓
Integrated dishwasher	✓	✓	✓	✓	✓	✓	✓	✓
Gas boiler	✓	✓	✓	✓	✓	✓	✓	✓
Free-standing sofas	✓	✓	✓	✓	✓	✓	✓	✓
Integrated fire place	✓	✓	✓	✓	✓	✓	✓	✓
Free-standing dining table and chairs	✓	✓	✓	✓	✓	✓	✓	✓
Coffee table	✓	✓	✓	✓	✓	✓	✓	✓
King size bed in master bedroom	✓	✓	✓	✓	✓	✓	✓	✗
Antique brass USB charging points and sockets throughout	✓	✓	✓	✓	✓	✓	✓	✓



Integrated Microwave



Integrated Fire Place

Exterior Colour Choice



Norwood 36 x 12 - 2 Bed shown in CanExel Sierra



Norwood 41 x 14 - 2 Bed shown in Sky Grey Artefoam



Norwood 40 x 20 - 2 Bed shown in CanExel Timberwolf

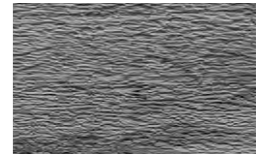
Exterior Cladding

Your Leisure Home, your way. Cladding colour choice is available at no extra cost, pick from a range of finishes to complement your taste, each has a matt effect finish with natural wood grain embossing.

Artefoam Wood Grain

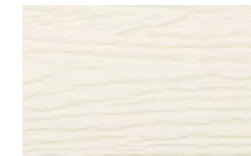


Tawny

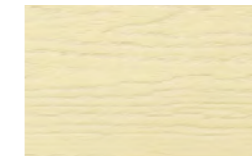


Sky Grey

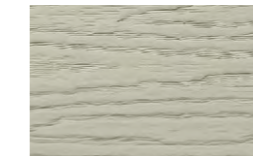
Artefoam Standard Grain



Creme



Beige



Light Grey



Claystone



Olive



Grey

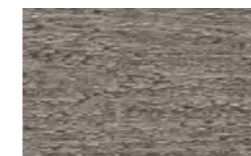


Quartz Grey

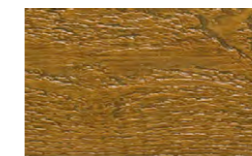


Quarry Grey

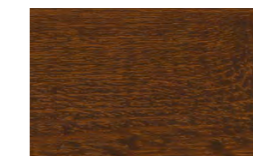
CanExel



Timberwolf



Sierra



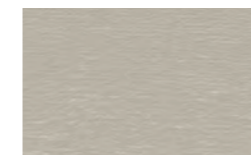
Red Fox



Cliffside



Acadia



Mist Grey



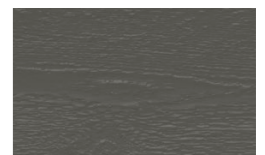
Yellowstone



Sand



Walnut

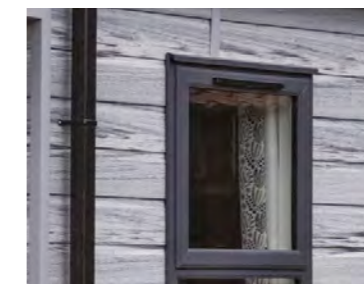


Granite

Window Colour

As standard our Leisure Homes come with black gutters and Anthracite glazing.

Other colours available on request.



Anthracite uPVC with Black Gutters



The printing process is matched as closely as possible to the colours of the materials and finishes offered, however this representation cannot be relied on as an exact colour match. Photographic props are used for illustration and presentation purposes only. Photographic credit to meadowsprings.co.uk.

The manufacturer reserves the right to change any material or fitting etc, shown in this brochure without prior notice depending on material availability or product improvement.

Making it Personal

www.beverleyleisurehomes.com

Call: 01964 508508 E-mail: enquiries@beverleyleisurehomes.com

Unit 2 Weel Rd, Tickton, Beverley HU17 9RY



ncc leisure vehicles
holiday & park homes
holiday & residential parks
leading & promoting the industry